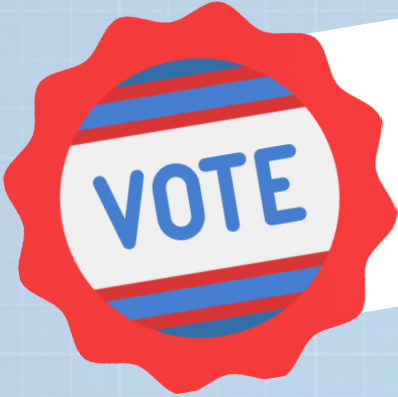




# Blueprint 181

*Investing. Growing. Leading.*



**Tuesday,  
April 10, 2018**

***15 Polling Places Throughout the District***

**Early Voting Starts  
Friday, February 23, 2018**



**Visit the Crow Wing County Elections Office  
2nd Floor West Wing, Historic Courthouse  
326 Laurel Street, Brainerd, MN**

**Tel: 218-824-1051**

**Office hours: 8 a.m. - 5 p.m.**

**Monday-Friday, except legal holidays  
and Saturday, April 7, 10 a.m. - 3 p.m.**



**Blueprint181@ISD181.org**



**www.Blueprint181.org**



**218-454-6900**



# *Blueprint 181*

*Investing. Growing. Leading.*

**Brainerd Public Schools, in partnership with the community, will ensure all students achieve their individual potential by providing the highest-quality programs and resources to prepare learners for an ever-changing global society.**

Dear Brainerd Public School District Residents,

On April 10, 2018, you will have the opportunity to vote on three ballot questions that address health, safety and educational needs in all of our schools. Our elementary schools are currently over enrollment capacity. Demand for space in our schools will continue to grow as enrollment increases by a projected seven percent by 2025. The facility plan outlined here will provide the learning environment necessary to prepare local learners for the world and workforce of today and tomorrow while also providing all of our 12 buildings with the security measures to help ensure the safety of our children, educators, parents and community members when they are in our schools.

Brainerd is known for academic excellence and for the strong relationships between our community and its schools. School leaders value the trust and respect of the people of this community.

Over the past three years, we've listened to our teachers, other school staff, students, parents, community members and local business leaders to explore solutions to school needs across the district. Our work has been guided by the 8 Objectives for school planning (see page 22). Community input is the foundation upon which the Board of Education developed a plan to meet the needs of local learners and local taxpayers.

Together, we've moved deliberately and thoughtfully through the 6 Phase Blueprint 181 Planning Process (see page 22). We have reached Phase 5: the Bond Election Process, the time when local residents will vote on the Board of Education plan. Now, we have the opportunity as a community to decide whether we move forward with the investment the Board of Education recommends we make in our schools, our students both present and future, and our community.

On the following pages, you will learn more about the plan for Brainerd Public Schools, the needs it addresses in each school building and the impact to taxpayers if local residents approve the plan.

Our goal is for you to have the information needed to make an informed decision on the plan. This is your decision. Now is the time to find out the facts so you are prepared to vote. Early voting begins February 23, 2018 and the bond election takes place on April 10, 2018.

Please visit [www.Blueprint181.org](http://www.Blueprint181.org) for regular updates. And, as always, we encourage you to contact us with your questions and comments by emailing [Blueprint181@isd181.org](mailto:Blueprint181@isd181.org) or calling [218-454-6900](tel:218-454-6900).

Sincerely,

Laine Larson, Superintendent, Brainerd Public Schools

Ruth Nelson, Board of Education Chair, Brainerd Public Schools

# Staff and Community Identified School Needs

## SAFE AND SECURE SCHOOLS

- Most buildings don't have controlled entrances to keep students, staff and visitors safe
- Not all school buildings can welcome students, teachers or others with physical disabilities
- Crowded parking and drop-off and pick-up areas where buses and cars are intermixed pose a potential safety risk
- High school students must cross busy roads between buildings

## MORE SPACE TO ACCOMMODATE GROWING ENROLLMENT

- Total elementary enrollment is already 300 children above the total school building capacity at our six elementary schools — and 200 more elementary students are expected through 2025
- Lack of space to meet growing demand for early childhood education to prepare children to succeed in kindergarten and beyond

## THE RIGHT SPACE TO PREPARE KIDS FOR THE WORLD AND WORKFORCE OF TOMORROW

- Limited Career & Technical Education and workforce development space at the high school
- Inadequate space at the high school for arts and athletic programs to be held on campus
- Lack of dedicated art, science and technology education space at the elementary schools
- Not enough breakout space for individual and small group work that sparks critical thinking, problem solving and collaboration

## IMPROVE EFFICIENCY AND ADDRESS MAINTENANCE NEEDS

- Maintenance costs are increasing as our buildings age; we have maintenance needs that exceed the district's regular maintenance budget

# Board of Education Plan Solutions

## SAFE AND SECURE SCHOOLS

- Buildings will have standardized safety measures including controlled entrances to provide improved safety
- Buildings will meet requirements of accessibility code
- Bus, parking and drop-off and pick-up areas will be separated for improved safety
- Major renovation to high school will bring grades 9-12 under one roof

## MORE SPACE TO ACCOMMODATE GROWING ENROLLMENT

- New elementary school in Baxter and remodeling and expansion of other elementary school buildings to accommodate the growing number of elementary school students
- Additional renovated space for early childhood education at current Baxter Elementary, Nisswa Elementary and Washington Educational Services building

## THE RIGHT SPACE TO PREPARE KIDS FOR THE WORLD AND WORKFORCE OF TOMORROW

- Improved Career & Technical Education and workforce development space at the high school to prepare kids for real world jobs
- Dedicated art, science and technology education space at elementary schools
- Major renovation to high school includes a new gymnasium, swimming pool, multi-purpose collaborative spaces and auditorium under one roof

## IMPROVE EFFICIENCY AND ADDRESS MAINTENANCE NEEDS

- Renovate buildings to meet today's health, safety, and educational adequacy needs, improve efficiency and preserve school district assets
- Bundle maintenance projects to achieve maximum cost efficiency

# The Board of Education Plan is Presented in Three Questions on the Ballot

Here's what the questions will look like when you vote, with a few notes added here to help clarify the language.

## School District Question 1 Improvement of Elementary Schools and Early Childhood Facilities

*A bond referendum is an election that allows local residents to decide whether the school district should sell bonds to fund improvements to local school buildings.*

Shall the school board of Independent School District No. 181 (Brainerd Public Schools) be authorized to issue its general obligation school building bonds in an amount not to exceed \$68,360,000 to provide funds for the acquisition and betterment of school sites and facilities, including the construction of secured entrances and security and safety improvements at elementary school facilities; the construction of parking lots, drop-off and pick-up locations, and traffic flow improvements at elementary schools; the acquisition of land for and the construction and equipping of a new elementary school facility and related improvements; the construction of improvements to repurpose and remodel existing elementary school facilities for use as early childhood education sites; the repair, remodeling, upgrading, equipping and construction of additions and improvements to existing elementary school sites and facilities; and the acquisition, installation and integration of improved technology and technology systems in elementary school facilities?

*Elementary schools are already significantly over enrollment capacity. Enrollment is projected to increase seven percent by 2025.*

*If approved by voters, the tax impact on a median valued home would be \$3 per month.\**

**BY VOTING "YES" ON THIS BALLOT QUESTION YOU ARE VOTING FOR A PROPERTY TAX INCREASE.**

YES

NO

\* Tax impact is based on a home with the median value for the district: \$156,200

Homeowners, as well as owners of seasonal, business or agricultural property can find out tax impact information for their property on the tax calculator at [Blueprint181.org](http://Blueprint181.org) or by calling the school district's financial consultant, Ehlers, Inc., at **1-800-552-1174** during regular business hours. Please allow one to three days for a response from Ehlers.

## School District Question 2

### Improvement of Secondary Schools and Alternative Education Facilities

Shall the school board of Independent School District No. 181 (Brainerd Public Schools) be authorized to issue its general obligation school building bonds in an amount not to exceed \$69,350,000 to provide funds for the acquisition and betterment of school sites and facilities, including the construction of secured entrances and security and safety improvements at secondary school facilities; the construction of parking lots, drop-off and pick-up locations, and traffic flow improvements at secondary schools; the acquisition of land for secondary school purposes; the repair, remodeling, upgrading and construction of improvements to existing secondary school sites and facilities; the acquisition, installation and integration of improved technology and technology systems in secondary school facilities; the construction and equipping of classroom, commons, pool, gymnasium and auditorium additions to the Brainerd High School North Campus facility; and the deconstruction of portions of the existing Brainerd High School South Campus facility and the entire Lincoln Education Center?

*The Board of Education has determined the existing funding can pay for 29 percent of the cost of the plan. The additional funding will come from the sale of bonds, if voters approve the referendum.*

**BY VOTING "YES" ON THIS BALLOT QUESTION,  
YOU ARE VOTING FOR A PROPERTY TAX INCREASE.**

YES

NO

*If approved by voters, the tax impact on a median valued home would be \$3 per month.\**

## School District Question 3

### Performing Arts Center Enhancements

If School District Question 2 is approved, shall the school board of Independent School District No. 181 (Brainerd Public Schools) also be authorized to issue its general obligation school building bonds in an amount not to exceed \$8,000,000 to provide funds for the acquisition and betterment of school sites and facilities, including the expansion of the proposed auditorium addition to the Brainerd High School North Campus site and facility to enable it to serve as a performing arts center; and the addition of an orchestra pit and other facility upgrades and the acquisition and installation of lighting, acoustic, sound and other enhancements to that improved auditorium facility?

*Approval of Ballot Question 3 will be contingent upon the approval of Ballot Question 2.*

**BY VOTING "YES" ON THIS BALLOT QUESTION,  
YOU ARE VOTING FOR A PROPERTY TAX INCREASE.**

YES

NO

*Additional space will allow for 1,200 seats and provide larger scale opportunities for students and community members.*

*If approved by voters, the tax impact on a median valued home would be \$1 per month.\**

# School Needs and The Plan to Meet Those Needs

## CURRENT BAXTER ELEMENTARY SCHOOL



### FAST FACTS

- Kindergarten-4th grade and Early Childhood Education programs
- Year built – 1955
- Right size capacity – 425 students
- Current enrollment – 484 students in Kindergarten-4th grade and approximately 63 in Early Childhood Education programs
- Current building size – 58,000 sq. ft.
- Current land area – 6.5 acres
- Maintenance needs– \$5.7 million

### THE NEEDS

- Enough classroom space for current students (the school is already 60 students over capacity) and for 140 additional students projected in coming years due to enrollment growth
- A controlled entrance and staff ability to monitor visitors
- Additional off-street parking
- Safer bus drop-off and pick-up area
- Rightsized classrooms to accommodate individual and small group learning
- Lack of science and art space
- Larger cafeteria, gymnasium and media center
- More Special Education space
- More Early Childhood Education space
- Necessary long-term maintenance projects that the current maintenance budget does not cover, such as roofing, exterior masonry repair, updates to parts of the building still using original heating and lacking cooling, replace worn flooring and repair or replace deteriorating sidewalks

### THE PLAN FOR CURRENT SCHOOL BUILDING

- Repurpose this school building as an Early Childhood Education center to meet growing parent demand
- Create a controlled entrance with staff supervision of guests entering the building
- Address the most pressing long-term maintenance needs, preserving our community's investment in the building
- Build a new elementary school to accommodate students in Kindergarten-4th grade

### THE COST

- Proposed plan: \$5 million



# School Needs and The Plan to Meet Those Needs

## NEW BAXTER ELEMENTARY SCHOOL

### THE PLAN FOR NEW SCHOOL BUILDING

- Build a new elementary school to accommodate a maximum of 625 students in Kindergarten-4th grade (5 sections per grade)
- Design building to offer a controlled entrance and ability to monitor visitors
- Design building to be accessible to those with mobility challenges
- Plan classrooms to be technology-integrated and laid out for 21st century instruction best practices
- Create dedicated space for science, technology and art instruction
- Design building to be energy efficient and durable

### THE COST

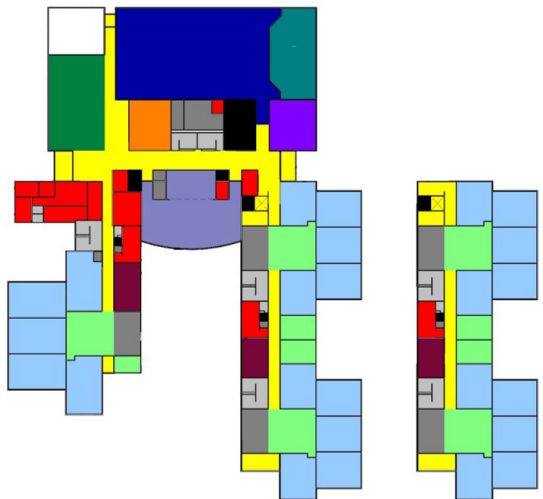
- Proposed plan: \$26 million

## Proposed New Baxter Elementary School



#### OCCUPANCY LEGEND

■ ADMINISTRATION	■ MECHANICAL
■ ART/SCIENCE/TECH	■ MEDIA CENTER
■ CAFETERIA	■ MUSIC
■ CIRCULATION	■ RESTROOM
■ COLLABORATION	■ SPECIAL EDUCATION
■ GENERAL CLASSROOM	■ STAGE
■ GYMNASIUM	■ STORAGE
■ KITCHEN	■ ADDITION



MAIN LEVEL

UPPER LEVEL

Conceptual images created by Wiseth Smith Nolting

# School Needs and The Plan to Meet Those Needs

## GARFIELD ELEMENTARY SCHOOL



### FAST FACTS

- Kindergarten-4th grade
- Year built – 1955
- Right size capacity – 375 students
- Current enrollment – 402 students
- Current building size - 48,000 sq. ft.
- Current land area – 4 acres
- Maintenance needs— \$7.4 million

### THE NEEDS

- Enough classroom space for current students (the school is already 25 students over capacity) and for 25 more students projected in coming years due to enrollment growth
- A controlled entrance and staff ability to monitor visitors
- Safer bus drop-off and pick-up area
- Larger kitchen and cafeteria to reduce lunch lines that stretch into hallway and block main entrance
- Lack of science, technology, art and music space
- Lack of appropriate Special Education space, including needed calming and timeout rooms
- Necessary long-term maintenance projects that the current maintenance budget does not cover, such as roofing, exterior masonry repair, updates to parts of the building still using original heating and lacking cooling, replace worn flooring and repair or replace deteriorating sidewalks, install fire suppression sprinklers in parts of the building that don't have them

### THE PLAN FOR THIS SCHOOL

- Expand the school site and add on to the building to create enough classroom, core and office space for 425 students
- Create a controlled entrance with staff supervision of guests entering the building
- Add off-street parking for staff and visitors
- Expand kitchen and reconfigure cafeteria to improve food service safety and efficiency and accommodate more students
- Create dedicated space for science, technology, art and music instruction
- Add necessary Special Education space
- Address the most pressing long-term maintenance needs, preserving our community's investment in the building

### THE COST

- Proposed plan: \$11 million



#### OCCUPANCY LEGEND

■ ADMINISTRATION	■ MECHANICAL
■ ART/SCIENCE/TECH	■ MEDIA CENTER
■ CAFETERIA	■ MUSIC
■ CIRCULATION	■ RESTROOM
■ COLLABORATION	■ SPECIAL EDUCATION
■ GENERAL CLASSROOM	■ STAGE
■ GYMNASIUM	■ STORAGE
■ KITCHEN	■ ADDITION

# School Needs and The Plan to Meet Those Needs

## HARRISON ELEMENTARY SCHOOL



### FAST FACTS

- Kindergarten-4th grade
- Year built – 1938
- Right size capacity – 250 students
- Current enrollment – 277 students
- Current building size – 35,000 sq. ft.
- Current land area – 2 acres
- Maintenance needs – \$9.1 million

### THE NEEDS

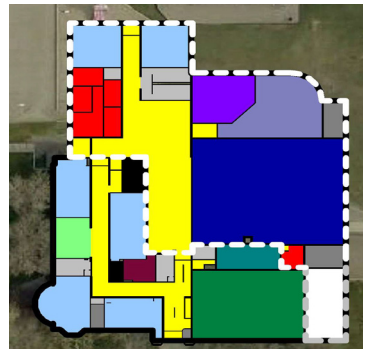
- Enough classroom space for current students (the school is already 27 students over capacity) and for 100 more students projected in coming years due to enrollment growth
- A controlled entrance and staff ability to monitor visitors
- Safer parking and drop-off and pick-up areas
- Compliance with disability access code
- Dedicated science, technology and art space
- Lack of appropriate Special Education space
- Larger cafeteria, gymnasium and media center
- Necessary long-term maintenance projects that the current maintenance budget does not cover, such as roofing, exterior masonry repair, updates to mechanical, electrical and plumbing systems, including replacement of original ventilation systems which cause indoor air quality problems

### THE PLAN FOR THIS SCHOOL

- Add on to the building to create enough classroom, core and office space for 375 students
- Create a controlled entrance with staff supervision of guests entering the building
- Separate bus and parent pick-up and drop-off areas, reducing safety risk
- Add an elevator, ramps and remodel bathrooms to make building accessible to those with mobility challenges
- Renovate to provide for dedicated science, technology and art space
- Add necessary Special Education instructional space
- Build new kitchen and cafeteria space to improve food service efficiency and expand the gymnasium and media center
- Address the most pressing long-term maintenance needs, preserving our community's investment in the building

### THE COST

- Proposed plan: \$19 million



OCCUPANCY LEGEND	
■ ADMINISTRATION	■ MECHANICAL
■ ART/SCIENCE/TECH	■ MEDIA CENTER
■ CAFETERIA	■ MUSIC
■ CIRCULATION	■ RESTROOM
■ COLLABORATION	■ SPECIAL EDUCATION
■ GENERAL CLASSROOM	■ STAGE
■ GYMNASIUM	■ STORAGE
■ KITCHEN	■ ADDITION

Conceptual images created by Widseth Smith Nolting

# School Needs and The Plan to Meet Those Needs

## LOWELL ELEMENTARY SCHOOL

### FAST FACTS

- Kindergarten-4th grade
- Year built – 1938
- Right size capacity – 350 students
- Current enrollment – 417 students
- Current building size – 42,000 sq. ft.
- Current land area – 2.5 acres
- Maintenance needs – \$3.4 million



### THE NEEDS

- Enough classroom space for current students (the school is already 65 students over capacity) and for 60 more students projected in coming years due to enrollment growth
- A controlled entrance and staff ability to monitor visitors
- Off-street parking and safer bus drop-off and pick-up areas
- Larger kitchen and cafeteria to reduce congestion during lunch
- Larger gymnasium
- Dedicated science, technology and art space
- More Special Education space, including addition of calming and timeout rooms
- Necessary long-term maintenance projects that the current maintenance budget does not cover, such as exterior masonry repair, replacement of worn flooring and repair or replacement of deteriorating sidewalks

### THE PLAN FOR THIS SCHOOL

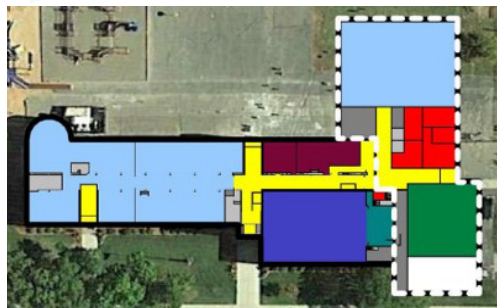
- Expand the school site and add on to the building to create enough classroom and core space for 475 students
- Create a controlled entrance with staff supervision of guests entering the building
- Add off-street parking for staff and visitors and separate bus and parent pick-up and drop-off areas
- Expand kitchen and reconfigure cafeteria to improve food service safety and efficiency and accommodate more students
- Add multi-purpose space to allow existing gymnasium to accommodate larger enrollment
- Create dedicated space for science, technology and art instruction
- Create additional Special Education space
- Address the most pressing long-term maintenance needs, preserving our community's investment in the building

### THE COST

- Proposed plan: \$13 million

#### OCCUPANCY LEGEND

■ ADMINISTRATION	■ MECHANICAL
■ ART/SCIENCE/TECH	■ MEDIA CENTER
■ CAFETERIA	■ MUSIC
■ CIRCULATION	■ RESTROOM
■ COLLABORATION	■ SPECIAL EDUCATION
■ GENERAL CLASSROOM	■ STAGE
■ GYMNASIUM	■ STORAGE
■ KITCHEN	■ ADDITION



Conceptual images created by Wiseth Smith Nolting

# School Needs and The Plan to Meet Those Needs

## NISSWA ELEMENTARY SCHOOL

### FAST FACTS

- Kindergarten-4th grade and Early Childhood Education programs
- Year built – 1952
- Right size capacity – 250 students
- Current enrollment – 300 students, Kindergarten-4th grade and approximately 30 in Early Childhood Education programs
- Current building size – 37,000 sq. ft.
- Current land area – 8 acres
- Maintenance needs– \$6.1 million



### THE NEEDS

- Enough classroom space for current students (the school is already 80 students over capacity) and for 95 more students projected in coming years due to enrollment growth
- A controlled entrance and staff ability to monitor visitors
- Right-sized classrooms for individual and small group learning
- Dedicated space for science, technology and art
- Larger gymnasium
- Larger kitchen
- More Special Education space, including a sensory/calming room near classrooms
- More space for Early Childhood Education classes, which have a long waitlist
- Necessary long-term maintenance projects that the current maintenance budget does not cover, such as roofing, exterior masonry repair, updates to parts of the building using original heating and lacking cooling, installation of fire suppression sprinklers throughout the building, replacement of worn flooring and repair or replacement of deteriorating sidewalks

### THE PLAN FOR THIS SCHOOL

- Add on to the building to create enough classroom and core space for 425 students in Early Childhood Education and Kindergarten – 4th grade
- Create a controlled entrance to allow staff supervision of guests entering the building
- Create space to allow for individual and small group learning
- Create dedicated space for science, technology and art instruction
- Expand the existing gymnasium
- Reconfigure the kitchen to improve food service efficiency
- Add necessary Special Education space
- Add Early Childhood Education space
- Address the most pressing long-term maintenance needs, preserving our community's investment in the building



### THE COST

- Proposed plan: \$12 million

# School Needs and The Plan to Meet Those Needs

## RIVERSIDE ELEMENTARY SCHOOL



### FAST FACTS

- Kindergarten-4th grade
- Year built – 1955
- Right size capacity – 500 students
- Current enrollment – 596 students
- Current building size – 88,000 sq. ft.
- Current land area – 5.5 acres
- Maintenance needs – \$3.9 million

### THE NEEDS

- Enough classroom space for current students (the school is already 96 students over capacity) and for 29 more students projected in coming years due to enrollment growth
- Improved staff ability to monitor visitors
- Better separation of bus and parent drop off and pick-up areas
- Provide restrooms that are accessible to those with physical disabilities
- Lack of dedicated science, technology and art space
- Shared gymnasium/cafeteria space limits physical education classes
- More Special Education space
- Necessary long-term maintenance projects that the current maintenance budget does not cover, such as roofing, exterior masonry repair, updates to parts of the building using original heating and lacking cooling, installation of fire suppression sprinklers throughout the building, replacement of worn flooring, including vinyl asbestos tile, and repair or replacement of deteriorating sidewalks

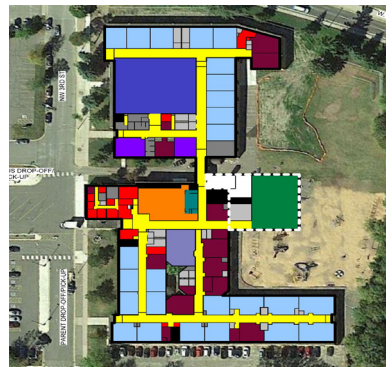
### THE PLAN FOR THIS SCHOOL

- Add on to the building to create enough classroom and core space for 625 students in Kindergarten – 4th grade
- Renovate entrance to allow staff supervision of guests entering the building
- Reconfigure bus and parent pick-up and drop-off areas to reduce safety risk
- Compliance with accessibility code
- Create dedicated space for science, technology and art instruction
- Add new cafeteria and kitchen and repurpose original cafeteria and kitchen as multi-purpose space to allow for more physical education classes in the gymnasium
- Add Special Education room
- Address the most pressing long-term maintenance needs, reserving our community's investment in the building

### THE COST

- Proposed plan: \$13 million

OCCUPANCY LEGEND	
■ ADMINISTRATION	■ MECHANICAL
■ ART/SCIENCE/TECH	■ MEDIA CENTER
■ CAFETERIA	■ MUSIC
■ CIRCULATION	■ RESTROOM
■ COLLABORATION	■ SPECIAL EDUCATION
■ GENERAL CLASSROOM	■ STAGE
■ GYMNASIUM	■ STORAGE
■ KITCHEN	■ ADDITION



Conceptual images created by Wiseth Smith Nolting

# School Needs and The Plan to Meet Those Needs

## FORESTVIEW MIDDLE SCHOOL



### FAST FACTS

- 5th-8th grade
- Year built – 2004
- Right size capacity – 2,200 students
- Current enrollment – 2,016 students
- Current building size – 339,000 sq. ft.
- Current land area – 181 acres
- Maintenance needs– \$1.1 million

### THE NEEDS

- A controlled main entrance and improved staff ability monitor visitors to the building
- Safer parent drop-off and pick-up area
- Limited maintenance projects that the current maintenance budget does not cover

### THE PLAN FOR THIS SCHOOL

- Remodel the main entry to add a controlled entrance and better staff monitoring of visitors to the building
- Reconfigure parent drop-off and pick-up area to improve traffic flow
- Address limited maintenance needs, preserving our community's investments in the building

### THE COST

- Proposed plan: \$1.5 million

# School Needs and The Plan to Meet Those Needs

## BRAINERD HIGH SCHOOL NORTH CAMPUS

### FAST FACTS

- 9th-12th grade
- Year built – 1968
- Right size capacity – 1,400 students
- Current enrollment – 1,862 students
- Current building size – 290,000 sq. ft.
- Current land area – 52 acres (combined acreage for North Campus and South Campus)
- Maintenance needs – \$15.7 million



### THE NEEDS

- Enough space to accommodate all classes for 9th-12th grade under one roof so that students aren't crossing a street to get to classes between buildings
- A controlled entrance and better staff ability to monitor visitors to the building
- Safer bus and parent drop-off and pick-up areas
- More space for individual and small group learning
- More Career & Technical Education and other workforce development space
- An auditorium large enough to accommodate student needs on site, so students don't have to walk to WESB to use the auditorium there
- Larger pool to accommodate multi-team swim meets with accessible locker rooms to accommodate those with mobility challenges
- More gymnasium space to accommodate number of students in 9th-12th grade
- Better technology integration
- Necessary long-term maintenance projects that the current maintenance budget does not cover, such as exterior masonry repair, upgrades to inadequate heating and ventilation system, repair or replacement of deteriorating sidewalks

### THE PLAN FOR NORTH CAMPUS

- Add on to the building to create enough space for all classes for 9th-12th grade students to take place under one roof, increasing educational and operational efficiencies and improving safety and security
- Create a controlled entrance and better staff ability to monitor visitors
- Separate bus and parent drop-off and pick-up areas
- Add right-sized classrooms and collaborative and multipurpose space
- Enhance Career & Technical Education and other workforce development space
- Add a 950 seat auditorium to accommodate high school musical and theatre performances and other community events on-site
- Add an 8 lane competition swim pool with spectator seating and accessible locker rooms
- Add a full-size gymnasium and locker rooms
- Improve technology access in classrooms and common areas
- Address the most pressing long-term maintenance needs, preserving our community's investment in the building

### THE COST FOR NORTH CAMPUS

- Proposed plan: \$79 million



# School Needs and The Plan to Meet Those Needs

## BRAINERD HIGH SCHOOL SOUTH CAMPUS

### FAST FACTS

- 9th-12th grade
- Year built – 1964
- Right size capacity – 600 students
- Current enrollment – varies throughout the day
- Current building size – 117,000 sq. ft.
- Current land area – 52 acres (combined acreage for North Campus and South Campus)
- Maintenance needs – \$5.8 million



### THE NEEDS

- More space for alternative and transitional education programs
- A controlled entrance and better staff ability to monitor visitors to the building
- Safer bus and parent drop-off and pick-up areas
- More parking spaces
- Space for district vehicle parking and servicing
- Necessary long-term maintenance projects that the current maintenance budget does not cover, such as replacement of worn flooring, repair or replacement of deteriorating sidewalks and electrical panel upgrades

### THE PLAN FOR SOUTH CAMPUS

- Relocate all classes for 9th-12th grade to the North Campus to accommodate more alternative and transitional programs, including programming currently at LEC
- Create a controlled entrance that allows staff to better monitor visitors
- Separate bus and parent drop-off and pick-up areas
- Increase parking by deconstructing a section of the south campus building
- Preserve space for district vehicle parking and servicing
- Address the most pressing long-term maintenance needs, preserving our community's investment in the building

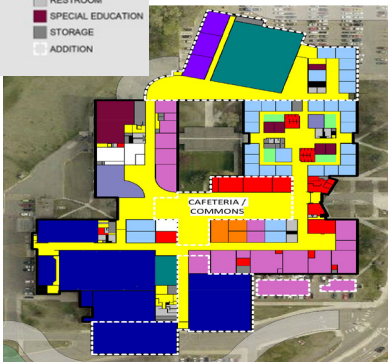
### THE COST

- Proposed plan: \$11 million

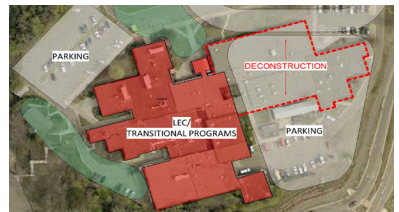
#### OCCUPANCY LEGEND

■ ADMINISTRATION	■ MECHANICAL
■ ART	■ MEDIA CENTER
■ ASSEMBLY	■ MUSIC
■ CAREER & TECH. ED.	■ RE-PURPOSE
■ CIRCULATION	■ RESTROOM
■ COLLABORATION	■ SPECIAL EDUCATION
■ GENERAL CLASSROOM	■ STORAGE
■ GYMNASIUM/POOL	■ ADDITION
■ KITCHEN	

#### Brainerd High School North Campus



#### Brainerd High School South Campus



Conceptual images created  
by Wiseth Smith Nolting

# School Needs and The Plan to Meet Those Needs

## WASHINGTON EDUCATION SERVICES BUILDING (WEB)



### FAST FACTS

- Year built – 1929
- Current enrollment – 90 in Early Childhood Education programs and 180 Kindergarten-8th graders who attend the out of school time child care program
- Current building size – 138,000 sq. ft.
- Current land area – 4.5 acres
- Maintenance needs — \$20 million

### THE NEEDS

- Updated classrooms and administration space
- A controlled entrance and better staff ability to monitor visitors, who can currently enter the building through multiple entrances with no staff interaction
- Most restrooms do not meet accessibility code
- Necessary long-term maintenance projects that the current maintenance budget does not cover, such as extensive exterior masonry repair, upgrades to inadequate heating and ventilation system, replacement of worn flooring, electrical panel upgrades and repairs to address water leaking into lower level storage rooms

### THE PLAN FOR THIS SCHOOL

- Remodel for continued use for Early Childhood Education programs (Brainerd Site), child care programs, and district administrative offices
- Create a controlled entrance and better staff monitoring of visitors to the building
- Renovate restrooms to accommodate those with mobility challenges
- Address the most pressing long-term maintenance needs, preserving our community's investment in the building

### THE COST

- Proposed plan : \$5 million

# School Needs and The Plan to Meet Those Needs

## BRAINERD LEARNING CENTER (BLC)



### FAST FACTS

- Year built – 2003
- Current Enrollment – 126 in Secondary Alternative programs and 200 in Early Childhood Education programs
- Current building size – 30,000 sq. ft.
- Current land area – 4 acres
- Maintenance needs – \$1.8 million

### THE NEEDS

- More alternative education space, including more workforce development instruction space
- Improve security at two entrances and increase staff ability to monitor visitors
- Better technology integration and more collaboration space
- Necessary long-term maintenance projects that the current maintenance budget does not cover, such as roof drainage improvements, repairs to the parking lot and other surfaces around the building and replacement of the building temperature control system

### THE PLAN FOR THIS SCHOOL

- Relocate Early Childhood Education classes to WESB to expand space available for alternative education at BLC, including the creation of dedicated Career & Technical Education and Family and Consumer Science space
- Create controlled entrances to the building, increase lobby space and improve staff ability to monitor visitors
- Improve technology integration in classrooms and common areas
- Address the most pressing long-term maintenance needs, preserving our community's investment in the building

### THE COST

- Proposed plan: \$1 million

# School Needs and The Plan to Meet Those Needs

## LINCOLN EDUCATION CENTER (LEC)



### FAST FACTS

- Year built – 1938
- Current enrollment – 65 students in alternative programs
- Current building size – 30,000 sq. ft.
- Current land area – 2 acres
- Maintenance needs – \$8.8 million

### THE NEEDS

- A secure entrance and better ability to monitor visitors
- Compliance with accessibility code throughout the building
- Classroom space is small, and some have limited natural light and there is limited collaborative and multi-purpose space
- The kitchen is too small and has expanded into the crowded cafeteria space, which has asbestos tile
- Necessary long-term maintenance projects that the current maintenance budget does not cover, such as exterior masonry repairs, roofing replacement, upgrades to electrical service and replacement of the original ventilation system which does not meet current indoor air quality guidelines

### THE PLAN FOR THIS SCHOOL

- Relocate programs at LEC to the Brainerd High School South Campus, which will be repurposed as a center for special, alternative and transitional education programs
- Deconstruct the LEC building

### THE COST

- Proposed plan: \$500,000 for deconstruction

# School Needs and The Plan to Meet Those Needs

## ENHANCED PERFORMING ARTS CENTER



### FAST FACTS

- Ballot Question 3 would fund an enhancement of the 950-seat high school auditorium proposed in Ballot Question 2 to a 1,200-seat performing arts center
- Ballot Question 2 would need to be approved for this Performing Arts Center enhancement in Ballot Question 3 to pass

### THE NEEDS

- Larger venue on high school campus to accommodate larger scale school performances and community events

### THE PLAN FOR THIS SCHOOL

- Add 250 additional seats than auditorium proposed in Ballot Question 2
- Add orchestra pit and larger stage, enhance acoustics, and upgrade sound and lighting systems

### THE COST

- Proposed plan: \$8 million



# Frequently Asked Questions

## What is a bond referendum?

A bond referendum is an election that allows local residents to decide whether the school district should sell bonds to fund improvements in local schools.

## Why are we voting on a bond referendum?

Residents will vote on April 10 whether to approve funding for the Board of Education's plan to make investments in our schools, including new construction and renovation that will enhance classroom education, improve health and safety and preserve the life of our buildings. Voters will decide whether to approve all or parts of the comprehensive long-range facilities plan, which is presented as three questions on the ballot (see sample ballot on pages 3-4).

## Why bond?

A bond is like a mortgage on your house, allowing all necessary investments to be made over several years but paying for the cost over 20-25 years. There are cost savings to this approach versus a piecemeal approach. It is less expensive to address multiple remodeling and repair projects at the same time and we avoid construction inflation by paying for labor and materials now instead of down the road.

## Have local community members been involved in the comprehensive long-range facilities planning process?

Yes. Local residents have been involved since planning began nearly three years ago. You can learn more about community involvement and see listening session notes and other reports by visiting [Blueprint181.org](http://Blueprint181.org).

## Why are these improvements needed now?

The plan addresses health, safety and classroom needs in all of the district's schools. Elementary schools are already significantly over enrollment capacity. The demand for more space will continue to grow as enrollment increases by a projected seven percent by 2025. In addition, there is growing demand for Early Childhood Education programs. The plan addresses deferred maintenance needs at all school buildings in an efficient way by planning to take care of multiple projects at once, to lower costs, and making necessary investments to preserve the facilities we have.

# Frequently Asked Questions

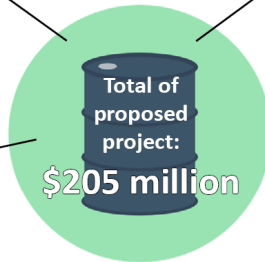
## How would this proposed plan be funded?

### Existing Funding Sources: \$27.49 million or 13%

These are funds already provided to the district to help maintain facilities that can be used more efficiently for large scale projects.

### Voter Approved Authority: \$145.71 million or 71%

These are funds that require voter approval and will appear on the ballot. Our community's large tax base means this amount is spread over many residential, commercial, seasonal and recreational properties.



### Existing Board of Education Authority: \$31.8 million or 16%

This is funding the Board of Education can collect from tax payers for very specific types of projects such as the parking lots and indoor air quality projects being proposed here.

## How is a plan like this funded?

School districts have annual maintenance budgets. Districts also have levy authority and state funds that supplement the maintenance budget. The Board of Education has determined this existing funding can pay for 29 percent of the cost of this plan. The additional funding will come from the sale of bonds, with voter approval.

## How would the outcome of this referendum affect my taxes?

Homeowners, as well as owners of seasonal, business or agricultural property, can find tax impact information for their property on the tax calculator at [Blueprint181.org](http://Blueprint181.org).

## Where and when is voting?

The polls will be open between 7 a.m. and 8 p.m. on Tuesday, April 10, 2018 at fifteen locations in the school district. These polling places are listed under Election Information at [Blueprint181.org](http://Blueprint181.org). Early voting begins on February 23, 2018. You can find out more about early voting at <http://crowwing.us/111/Absentee-Voting> or by calling **218-824-1051**.

## Where can I find out more?

Local residents are encouraged to continue to share their comments, ask questions and get involved by visiting [Blueprint181.org](http://Blueprint181.org) or calling **218-454-6900**.

# Overall Goal: Planning for Facilities That Promote Opportunity, Innovation and Success for All Learners

## 8 Objectives

1. Safe and secure facilities
2. Mechanical and education adequacy updates
3. Space that fosters best practice instruction and 21st century learning opportunities
4. Spaces that promote robust opportunities in academics, arts, activities and athletics
5. Increased community collaboration, career and technical education opportunities and workforce development initiatives
6. Visionary technology integration
7. Transparency, engagement and community trust-building
8. Highest-quality educational opportunities for our taxpayers' generous investment

## 6 Phase Planning Process

1. **Communications planning to inform all stakeholders about the district and this process. This phase is ongoing.**
  - Public meetings, Blueprint181.org, social media, local newspapers, local radio, newsletters and more
2. **Stakeholder input to gather information and ideas from community members. This phase is ongoing.**
  - Stakeholders have been deeply involved in plan development, including through the more than 150 listening sessions with teachers, school staff, school bus drivers, parents and students, local business leaders and other community members
3. **Surveys and assessments to collect data on which to make sound decisions that reflect community desires.**
  - Scientific and online survey garnered participation by nearly 1,800 residents and school staff
  - Traffic study
4. **Develop options and alternatives to ensure that the plan addresses the most pressing issues.**
  - Narrowing project to a manageable, affordable scope
5. **Bond election process for the voters to determine how the district moves forward with facilities.**
  - Early voting starts February 23, 2018 (see back cover for early voting details)
  - Referendum date is April 10, 2018
6. **Construction management if funding is voter approved and we move forward with the plan.**
  - If any or all of the ballot questions are approved by voters, design work will begin immediately
  - Construction and renovation work will begin shortly after the design work is complete. Safe classrooms, hallways and other school spaces will be provided for all students during construction and renovation



**We Are  
Here**



# Investments in Our Schools Benefit the Whole Community

*Here are a few examples:*



**Bridges Career Academy and Workforce Connection:** Students are offered the opportunity to explore a career pathway while preparing for employment and/or post-secondary education. Areas of exploration include agriculture, building trades, engineering, health care and more.



**ProStart:** Brainerd High School students interested in hospitality careers learn from the experts at Breezy Point, Cragun's, Grand View Lodge, Kavanaugh's, Madden's, Ruttger's and other Brainerd Lakes landmarks. Students have the opportunity to:

- Use professional equipment for food prep
- Learn about food and kitchen safety
- Gain experience in restaurant operations, including customer service, accounting and management



This introduces local students to career opportunities in the hospitality industry and helps prepare future employees to contribute to this important sector of our local economy.





Arts




 *Academics*

- All six elementary schools recognized as 2014 National Blue Ribbon Schools
- A Forestview Middle School 8th grader competed in the 90th Scripps National Spelling Bee in 2017
- Seven Brainerd High School students were commended in the 2017 National Merit Scholarship program

*Athletics* 

- Brainerd High School sports: 27
- Forestview Middle School sports: 17
- Elementary sports offered through Community Education: 8




 *Activities*

- Community Education offers numerous out of school time activities for students at every grade level and community members of all ages throughout the year
- Brainerd High School clubs and activities: 27+
- Forestview Middle School clubs and activities: 11+
- Elementary school clubs and activities: 15



## Early Voting Starts: February 23, 2018

**Absentee ballots** are available as of February 23, 45 days prior to the election. A completed and signed absentee ballot application must be received by mail before a ballot can be issued to a voter. Absentee ballots must be returned to the Crow Wing County Elections Office no later than 3 p.m. on Election Day in order to be counted.

Voters may also vote early in person during the 45 day absentee period at the Crow Wing County Elections Office.

Crow Wing County Elections Office  
2nd Floor West Wing, Historic Courthouse  
326 Laurel Street, Brainerd, MN  
Tel: 218-824-1051

Office hours: 8 a.m. - 5 p.m. Monday - Friday, except legal holidays  
and Saturday, April 7, 10 a.m. - 3 p.m.

Military or overseas voters can also vote by absentee ballot. More information can be found on the Minnesota Secretary of State Military/Overseas Voting page.

### Important Notice

To comply with USPS (post office) processing deadlines:

- For applications received prior to 3 p.m. ballots will be mailed the same day
- For applications received after 3 p.m. ballots will be mailed the next business day





# *Blueprint 181*

*Investing. Growing. Leading.*

**[www.Blueprint181.org](http://www.Blueprint181.org)**